

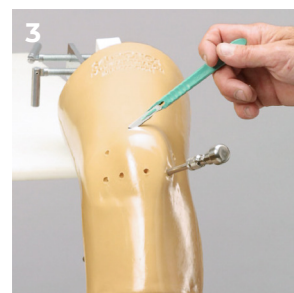
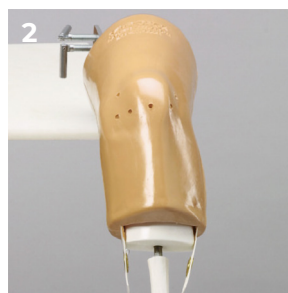


THANK YOU FOR PURCHASING THE SAWBONES ARTHROSCOPY KNEE (DRY MODEL)

This arthroscopy model may be used for diagnostic and visualization skills including triangulation, and pathology identification. Meniscectomy, loose body retrieval and some suturing applications may also be performed. This model may also be manipulated in full range of motion including varus and valgus positions. With a little care and maintenance your new model should provide you with many years of service.

FEATURES

1. The arthroscopy knee model can be moved in flexion, extension, varus and valgus.
2. If more space is desired within the joint space, remove one or both of the tibial plug retaining straps.
3. This model comes with eight standard pre-molded portals. Additional portals may be created with a #11 scalpel and a sharp trochar.



COMPONENTS & ANATOMY

MODELS INCLUDE:

- Soft tissue knee
- Tibial plug & shaft
- Normal patella
- Normal meniscus
- Bone clamp
- C-clamp

ANATOMICAL STRUCTURE:

- Distal femur
- Normal anatomy patella
- Proximal tibia
- Collateral ligaments
- Anterior/posterior ligaments
- Normal anatomy meniscus
- Synovial capsule

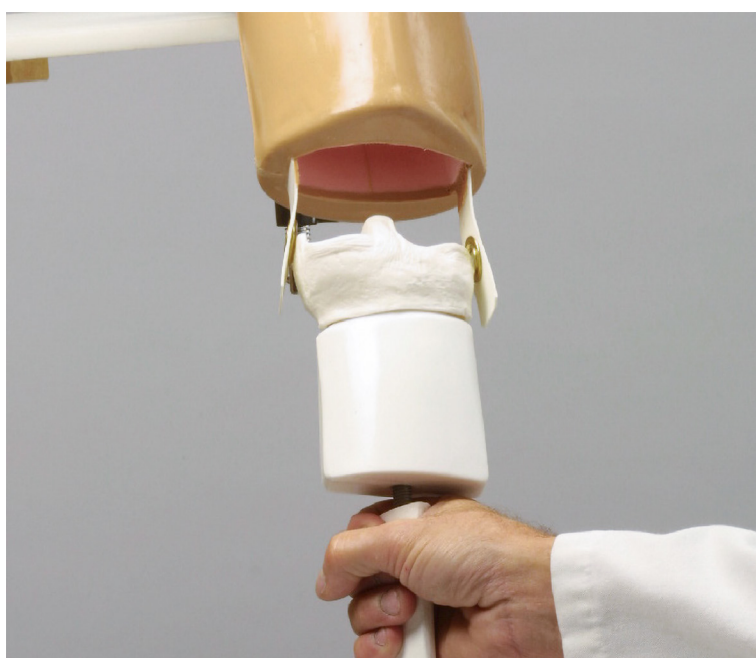
NOTE: Replacement parts available at www.sawbones.com



SET-UP INSTRUCTIONS

1. Attach the bone and C-clamp combination to the table as shown.
2. Secure the femoral shaft in the bone clamp.

INSERT REMOVAL & REPLACEMENT



MENISCAL REMOVAL:

1. Leave model attached to bone clamp.
2. Unscrew tibial shaft from tibial plug.
3. Release straps and reattach tibial shaft to tibial plug.
4. Remove tibial plug from soft tissue cavity using the reattached tibial shaft as a handle
5. Remove meniscal cap from tibial plug.



MENISCAL REPLACEMENT:

1. Orient the meniscus so the anterior portion matches that of the tibial plug.
2. Install new meniscus by pressing it over tibial plug.
3. Reinstall plug and shaft in reverse order of removal.

CARE & MAINTENANCE

Your model can be wiped down with any mild cleaner. Use only the dry erase marker on the model. Standard ink can not be removed. Store in a dry, dark place out of direct contact with sunlight.

REPLACEMENT PARTS (WWW.SAWBONES.COM)



1400-5
Knee soft tissue



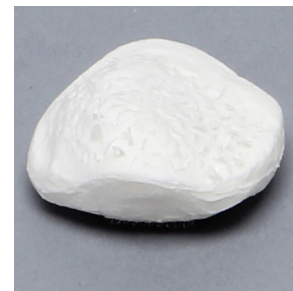
1116-21
Tibial plug, dry model



1116-22
Tibial shaft



1119-4
Patella, normal



1407
Patella fronds



1402
Meniscus, normal



1403
Meniscus, pathology



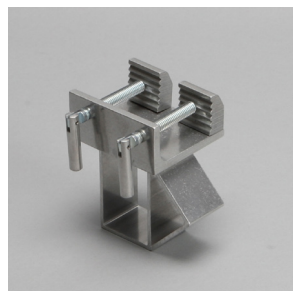
1404
Meniscus, pathology



1405
Meniscus, pathology



1406
Meniscus, pathology



1600
Bone clamp



1601
C-clamp